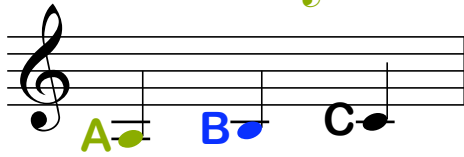


**\*NEW NOTE:**  **A4**



**\*\*Swing** rhythm means that **eighth notes** are played with an uneven long-short rhythm style (or *feel*). We hear the *swing* feel in many jazz, rock and folk tunes, even though there is often no visible indication for *swing* in the sheet music. To learn more about *swing* rhythm, please watch the *Erie Canal* video on [www.UpperHandsPiano.com](http://www.UpperHandsPiano.com).

## Erie Canal

**\*\*Swing**

Thomas S. Allen

I've got a mule her name is Sal, fif-teen miles on the  
 Er - ie Ca - nal. She's a good old work-er and a good old pal,  
 fif - teen miles on the Er - ie Ca - nal. We've hauled some bar - ges  
 in our day, filled with lum-ber coal and hay. And we know ev - ery  
 inch of the way from Al - ba - ny to Buf - fa - lo.

*Erie Canal* was written in 1905, to commemorate the days before engines took the place of mules who could pull barges up the canal only about 15 miles per day.

**\*Treble A4 is the same key as the bass A4 on p. 64, except that it is located on the treble staff, and played with the right hand. As you can see, notes can overlap staves.**

